

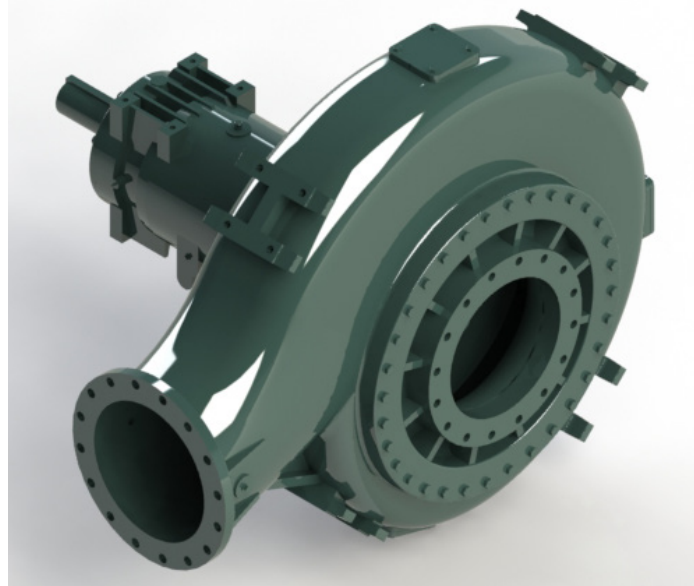
18NHG34-F

AVAILABLE MOUNTING CONFIGURATIONS

18NHG34-F FRAME MOUNT
18NHG34-RP-F RED-PRIME FRAME MOUNT
18NHG34-VF VERTICAL MOUNT

OPERATING LEVELS

MIN FLOW	4000 GPM	908 m ³ /h
MAX FLOW	24000 GPM	5450 m ³ /h
DISCHARGE SIZE	18"	457.2 mm
SUCTION SIZE	18"	457.2 mm
SOLIDS HANDLING	4.5"	114 mm
MAX SPEED	900 RPM	900 RPM
SHUT-OFF HEAD	320'	98 m
BEP HEAD	220'	67 m
BEP FLOW	16820 GPM	3820 m ³ /h
BEP PERCENT	85%	85%



A typical picture of the pump is shown. Please contact Gemstone Pump Company for further details. All information is approximate and for general guidance only.

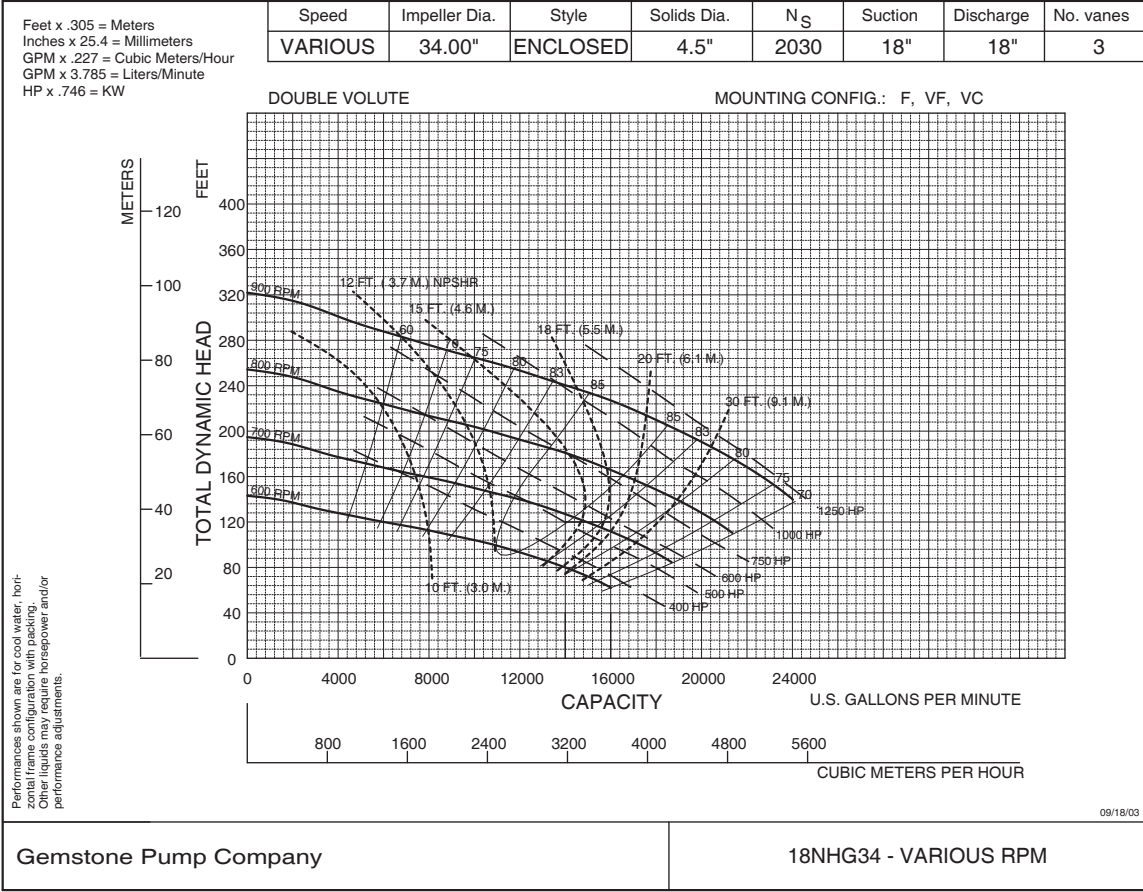
The 18NHG34 pump is designed with Gemstone's renowned quality and durability. It features an 18" discharge, 18" suction, double volute, and enclosed impeller. Gemstone's patented Cycloseal® design is standard, with a Type 2 single mechanical seal with Buna-N elastomers, stainless steel hardware and tungsten carbide vs. silicon carbide seal faces for abrasion resistance.

- Robust solids handling capability •
- Premium hydraulic efficiency •
- Cycloseal® design mechanical seal •
- Heavy-duty construction •
- RunDry™ option •
- Redi-Prime® fully automatic self-priming; dry-priming available
- Double volute

PARTS	STANDARD MATERIAL (ALL IRON)
WEAR RING	CAST IRON
IMPELLER	DUCTILE IRON
VOLUTE	DUCTILE IRON
VOLUTE CASING	DUCTILE IRON
SHAFT	17-4PH STEEL
SHAFT SLEEVE	416SS STAINLESS STEEL
SUCTION COVER	DUCTILE IRON
MECHANICAL SEAL	TUNGSTEN CARBIDE VS. SILICON CARBIDE
BEARING HOUSING	CAST IRON
BEARING FRAME	CAST IRON
FRAME	CAST IRON



18NHG34-F



NEW PAGE
18NHG34VA

