

**GEMSTONE PUMP COMPANY**

200 - 1100 GPM

3 YL

150 - 300 Feet TDH

STANDARD SPECIFICATION**Discharge** - 3 inch threaded discharge**Suction** - 4 inch threaded suction**Impeller** - Enclosed bronze**Volute** - Right hand tangential discharge, four positions**Mechanical Seal or Traditional Packing** - Single type 1 carbon ceramic mechanical seal: Cycloseal® design, Run-dry available**Materials of Construction**

- Cast iron bronze fitted
- Other materials available

**PURCHASE OPTIONS****• Complete Pump**

- Fully assembled at the factory
- Ready to go to the field

• Pump End Kit Finished components

- PrePainted

Easy assembly

- Common tools -
- Simple instructions

Obtain drives locally or through Gemstone

MOUNTING OPTIONS**• Close Coupled Electric Standard**

- JP motor shaft
- Standard Efficiency - Cornell's Energy Efficient Design

• Frame Mount

Gemstone F85

• Engine Bracket

- Gemstone EM309 (SAE 5)
- Gemstone EM85 (SAE 3 and 4)

FEATURES & BENEFITS**• Gemstone's Tradition of Excellence:**

- Highest Quality Products**
- Experience**
 - Over 50 years in the centrifugal pump business

• Optimum Hydraulics

- In house engineering staff and test lab facilities

• Strong Local Dealer Support

- Our agricultural products are sold only through authorized dealerships
- Dealerships provide full service to customers from sales to replacement parts
- Dealers maintain and improve their knowledge at educational activities like Cornell's "Pump School"

• Economically Priced:**• Component Design**

- Efficient manufacturing through increased volume of common parts

• Versatility

- The ability to mix and match components reducing local inventory of both parts and wholegoods with a wide variety of pumps and mounting configurations for the customer

• Exceptional Design:**• Efficiency**

- Effectively converts energy into fluid flow and pressure

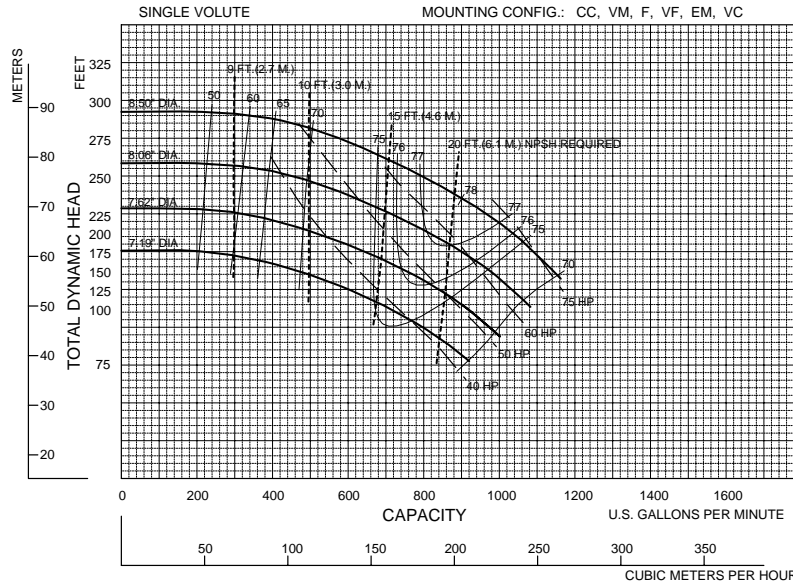
• Long Product Life

- Thick walled castings -
- Heavy duty shafts
- 20,000 hour bearings -
- Replaceable wear rings and shaft sleeves -
- Reduced thrust load through design and balance lines where appropriate

PERFORMANCE CURVES

**3 YL
3600 RPM**

Speed	Impeller Dia.	Style	Solids Dia.	N _S	Suction	Discharge	No. vanes
3525 RPM	VARIOUS	ENCLOSED	.50"	1750	4"	3"	6



Note:
Curves also available in 1800 and various RPM

Performance shown on this chart is based on clean water. Other mounting styles or liquids may require independent motor performance adjustments.

01/00

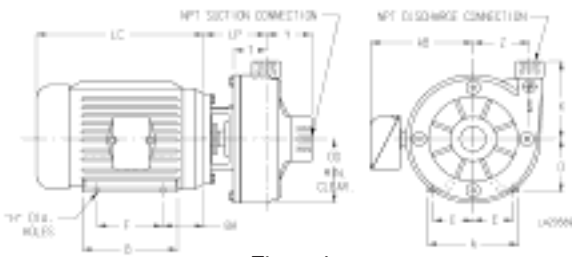


Figure 1

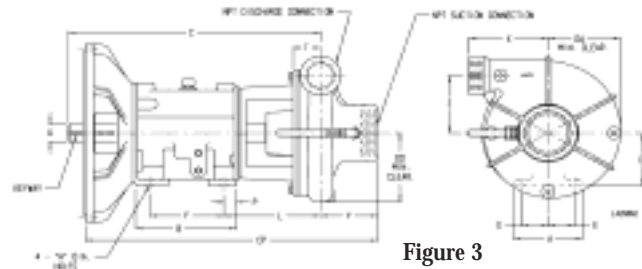


Figure 3

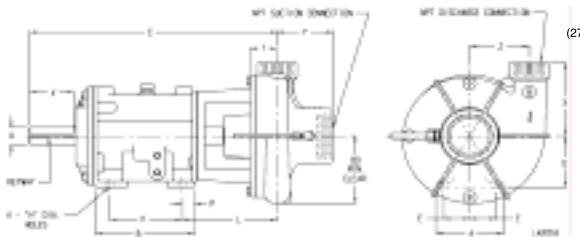


Figure 2

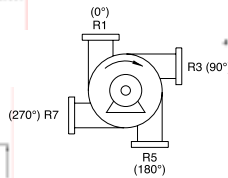


Figure 4

PUMP DIMENSIONS

MOUNT	AK	Fig.	A	B	C	CP	D	DA	DD	E	F	H	L	P	T	U	V	X	Y	Z	LP	KEYWAY
CC	8.5	1	-	-	-	-	-	-	7.62	-	-	-	-	-	2.78	-	-	8.35	4.81	6.5	7.63	-
	12.5	1	-	-	-	-	-	-	7.62	-	-	-	-	-	2.78	-	-	8.35	4.81	6.5	7.63	-
F85	-	2	6.5	9.52	24.47	-	5.25	-	7.62	2.5	7	0.69	9.38	1.16	2.78	2	4.81	8.35	4.81	6.5	-	.50 X .25
EM85	-	3	6.5	9.52	24.47	27.28	5.25	7.62	7.25	2.5	7	0.69	9.38	1.16	2.78	2	-	8.35	4.81	6.5	-	.50 X .25
EM309	-	4	-	-	17.87	21.31	-	-	7.62	-	-	-	-	-	2.78	1.25	-	8.35	4.81	6.5	-	.25 X .12

MOTOR DIMENSIONS

MOTOR FRAME	AK DIM.	A	B	D	E	F	H	AB	BA	LC
143-5	4.5	6.5	5.94	3.5	2.75	5	0.34	5.62	2.88	10
182-3	4.5	8.62	6.5	4.5	3.75	5.5	0.41	6.75	3.5	12.25
	8.5	8.62	6.5	4.5	3.75	5.5	0.41	6.75	3.5	12.25
213-5	8.5	9.5	8	5.25	4.25	7	0.41	7.94	4.5	13.69
254-6	8.5	11.25	11.25	6.25	5	10	0.53	9.5	5	17.94
284-6	12.5	12.25	12.25	7	5.5	11	0.53	11.37	5	21.31
324-6	12.5	14.25	13.75	8	6.25	12	0.66	12.22	5.5	22.19
364-5	12.5	15.75	14	9	7	12.25	0.66	13.2	6.12	24.31
404-5	12.5	18.5	16.62	10	8	13.75	0.81	16.39	6.88	29.97

Gemstone Pump Company

ISO9001:2000 CERTIFIED