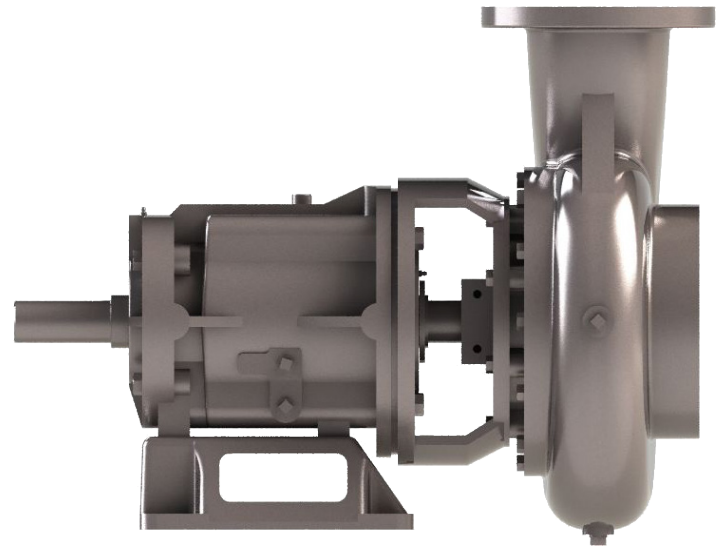


### AVAILABLE MOUNTING CONFIGURATIONS

4NNT-F FRAME MOUNT  
 4NNT-RP-F REDI-PRIME FRAME MOUNT  
 4NNT-EM ENGINE MOUNT  
 4NNT-RP-EM REDI-PRIME ENGINE MOUNT  
 4NNT-VC VERTICAL COUPLED  
 4NNT-VF VERTICAL FRAME MOUNT

### OPERATING LEVELS

<b>MIN FLOW</b>	180 GPM	41 m <sup>3</sup> /h
<b>MAX FLOW</b>	1300 GPM	295 m <sup>3</sup> /h
<b>DISCHARGE SIZE</b>	4"	101.6 mm
<b>SUCTION SIZE</b>	4"	101.6 mm
<b>SOLIDS HANDLING</b>	3"	76.2 mm
<b>MAX SPEED</b>	1800 RPM	1800 RPM
<b>SHUT-OFF HEAD</b>	122'	37.2 m
<b>BEP HEAD</b>	81'	24.6 m
<b>BEP FLOW</b>	760 GPM	172.6 m <sup>3</sup> /h
<b>BEP PERCENT</b>	76%	76%



A typical picture of the pump is shown. Please contact Gemstone Pump Company for further details. All information is approximate and for general guidance only.

PARTS	STANDARD MATERIAL (ALL IRON)
<b>WEAR RING</b>	CAST IRON
<b>IMPELLER</b>	CAST IRON
<b>VOLUTE</b>	CAST IRON
<b>SHAFT</b>	STRESSPROOF STEEL
<b>SHAFT SLEEVE</b>	416 STAINLESS STEEL
<b>BACKPLATE</b>	CAST IRON
<b>MECHANICAL SEAL</b>	TUNGSTEN CARBIDE VS. SILICON CARBIDE
<b>BEARING FRAME</b>	CAST IRON

The 4NNT pump is designed with Gemstone's renowned quality and durability. It features a 4" discharge, 4" suction, and enclosed impeller. Gemstone's patented Cycloseal® design is standard, with a Type 1 or 2 single mechanical seal with Buna-N elastomers, stainless steel hardware and tungsten carbide vs. silicon carbide seal faces for abrasion resistance.

**Frame mounted models:** Heavy-duty, grease lubricated, single row ball bearings with a minimum of 50,000 hours bearing life. 900/1200/1800 RPM operating speeds. Vertical configurations include a 4" suction elbow with other options available. Uses an F16 frame (horizontal) or VC16 frame (vertical).

**Engine-mounted models:** 900/1800 RPM operating speeds.

- Patented Cycloseal design •
- Heavy-duty bearing frame •
- Industry-leading two-year warranty •
- Industry-leading efficiencies •
- Heavy duty construction •
- Redi-Prime® available for fully-automatic continuous priming



AGRICULTURE



FOOD



INDUSTRIAL



MINING



MUNICIPAL



OIL & GAS



REFRIGERATION



RENTAL

